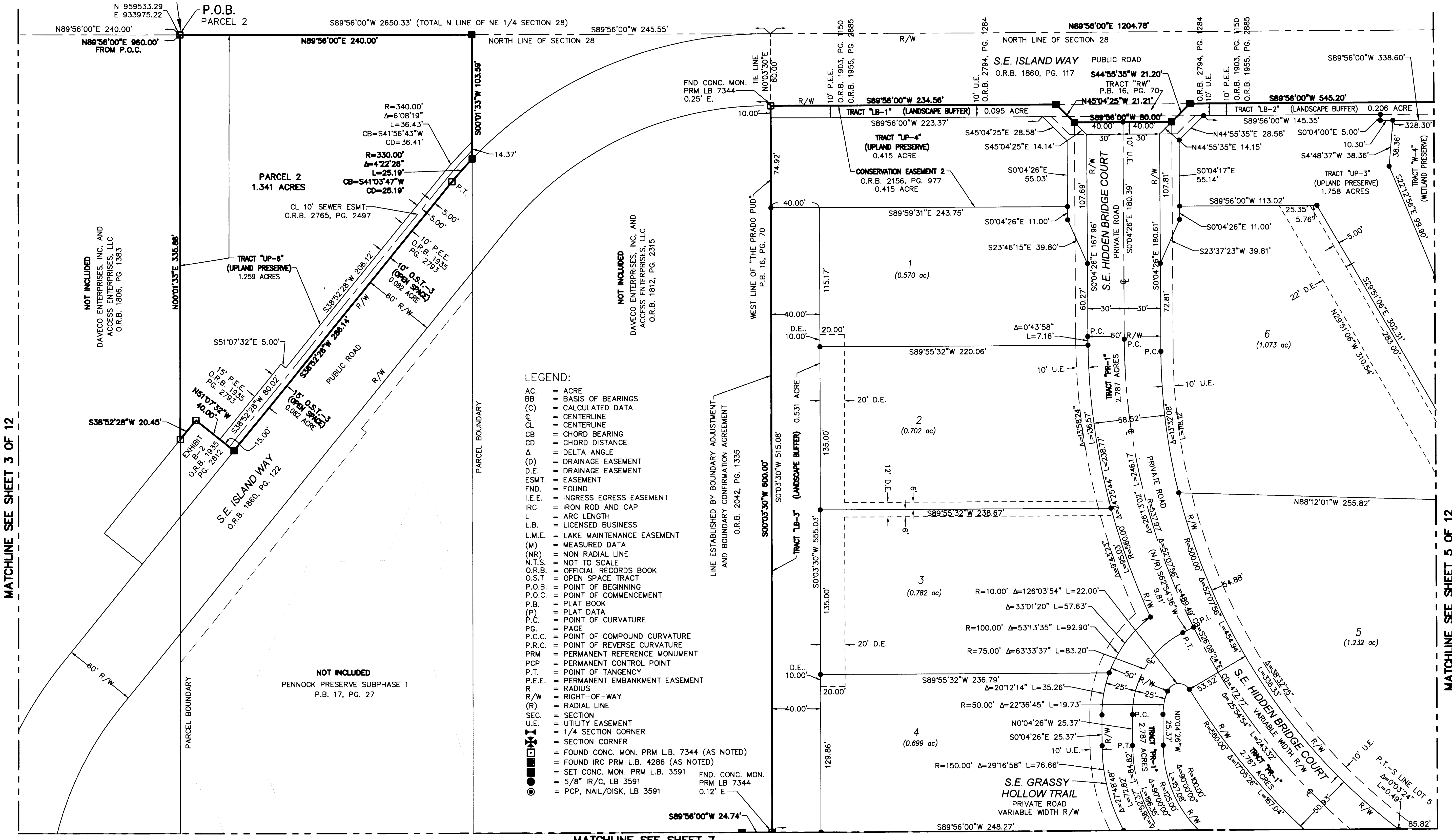
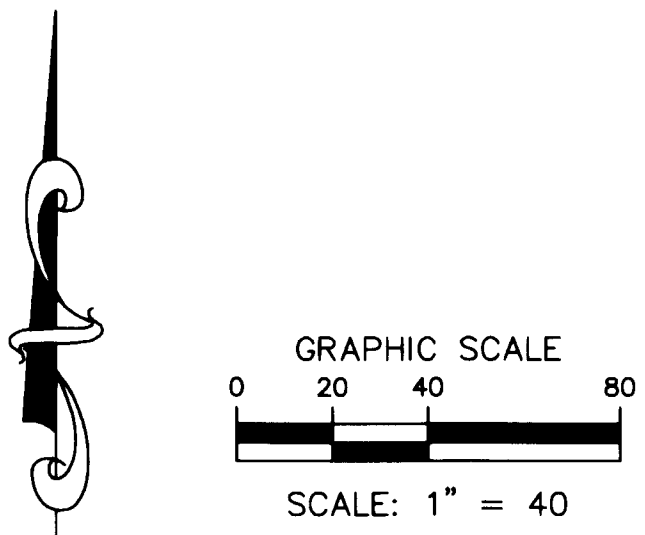
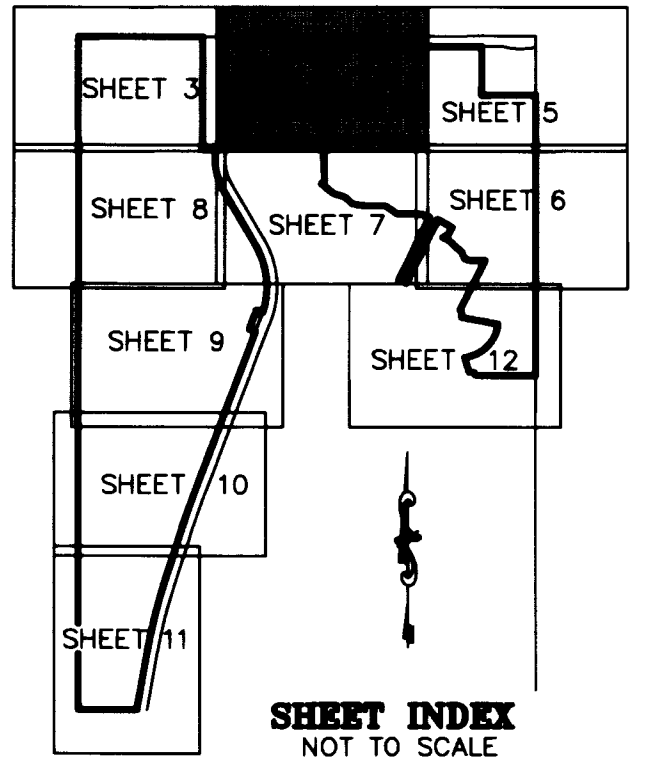


PENNOCK PRESERVE PUD, PHASE 1

BEING A REPLAT OF A PORTION OF "THE PRADO PUD", RECORDED IN PLAT BOOK 16 AT PAGE 70, PUBLIC RECORDS OF MARTIN COUNTY, FLORIDA, TOGETHER WITH OTHER LANDS, ALL LYING IN SECTION 28, TOWNSHIP 40 SOUTH, RANGE 42 EAST MARTIN COUNTY, FLORIDA SHEET 4 OF 12

THIS INSTRUMENT PREPARED BY DAVID P. LINDLEY OF CAULFIELD and WHEELER, INC. SURVEYORS - ENGINEERS - PLANNERS 7900 GLADES ROAD, SUITE 100 BOCA RATON, FLORIDA 33434 - (561)392-1991 CERTIFICATE OF AUTHORIZATION NO. LB3591



- LEGEND:
- AC. = ACRE
 - BB = BASIS OF BEARINGS
 - (C) = CALCULATED DATA
 - CL = CENTERLINE
 - CL = CENTERLINE
 - CB = CHORD BEARING
 - CD = CHORD DISTANCE
 - Δ = DELTA ANGLE
 - (D) = DRAINAGE EASEMENT
 - D.E. = DRAINAGE EASEMENT
 - ESMT. = EASEMENT
 - FND. = FOUND
 - I.E.E. = INGRESS EGRESS EASEMENT
 - IRC = IRON ROD AND CAP
 - L = ARC LENGTH
 - L.B. = LICENSED BUSINESS
 - L.M.E. = LAKE MAINTENANCE EASEMENT
 - (M) = MEASURED DATA
 - (NR) = NON RADIAL LINE
 - N.T.S. = NOT TO SCALE
 - O.R.B. = OFFICIAL RECORDS BOOK
 - O.S.T. = OPEN SPACE TRACT
 - P.O.B. = POINT OF BEGINNING
 - P.O.C. = POINT OF COMMENCEMENT
 - P.B. = PLAT BOOK
 - (P) = PLAT DATA
 - P.C. = POINT OF CURVATURE
 - PG. = PAGE
 - P.C.C. = POINT OF COMPOUND CURVATURE
 - P.R.C. = POINT OF REVERSE CURVATURE
 - PRM = PERMANENT REFERENCE MONUMENT
 - PCP = PERMANENT CONTROL POINT
 - P.T. = POINT OF TANGENCY
 - P.E.E. = PERMANENT EMBANKMENT EASEMENT
 - R = RADIUS
 - R/W = RIGHT-OF-WAY
 - (R) = RADIAL LINE
 - SEC. = SECTION
 - U.E. = UTILITY EASEMENT
 - 1/4 SECTION CORNER = 1/4 SECTION CORNER
 - SECTION CORNER = SECTION CORNER
 - FOUND CONC. MON. PRM L.B. 7344 (AS NOTED) = FOUND CONC. MON. PRM L.B. 7344 (AS NOTED)
 - FOUND IRC PRM L.B. 4286 (AS NOTED) = FOUND IRC PRM L.B. 4286 (AS NOTED)
 - SET CONC. MON. PRM L.B. 3591 = SET CONC. MON. PRM L.B. 3591
 - 5/8" IR/C, LB 3591 = 5/8" IR/C, LB 3591
 - PCP, NAIL/DISK, LB 3591 = PCP, NAIL/DISK, LB 3591
 - FND. CONC. MON. PRM LB 7344 = FND. CONC. MON. PRM LB 7344
 - 0.12' E = 0.12' E

MATCHLINE SEE SHEET 3 OF 12

MATCHLINE SEE SHEET 7

MATCHLINE SEE SHEET 5 OF 12